

THE PEAKS

Park Avenue, Newcastle, Co. Down

LUXURY APARTMENTS WITH MOUNTAIN VIEWS



Image: Courtesy of Tourism Northern Ireland

Newcastle Beach
Co, Down

This is the lifestyle that we aspire to...
So, why wait?





Image: Courtesy of Tourism Northern Ireland

LIVING THE DREAM. **EVERY DAY.**

The Peaks is a boutique development of just five luxury two-bedroom apartments. Located on Park Avenue, these homes enjoy a central location in Newcastle, Co. Down with panoramic views of the Mourne Mountains.

Newcastle is known worldwide through whimsical references to those famous mountains ‘...that sweep down to the sea’ and that it is home to one of the world’s most famous Golf Courses.

A renaissance in Newcastle has resulted in this coastal town’s triumphant return to its Victorian splendour. The environmental and aesthetic impact is everywhere, from the stunning promenade, timber boardwalks and connected access to beaches, woodland, forests and mountains.

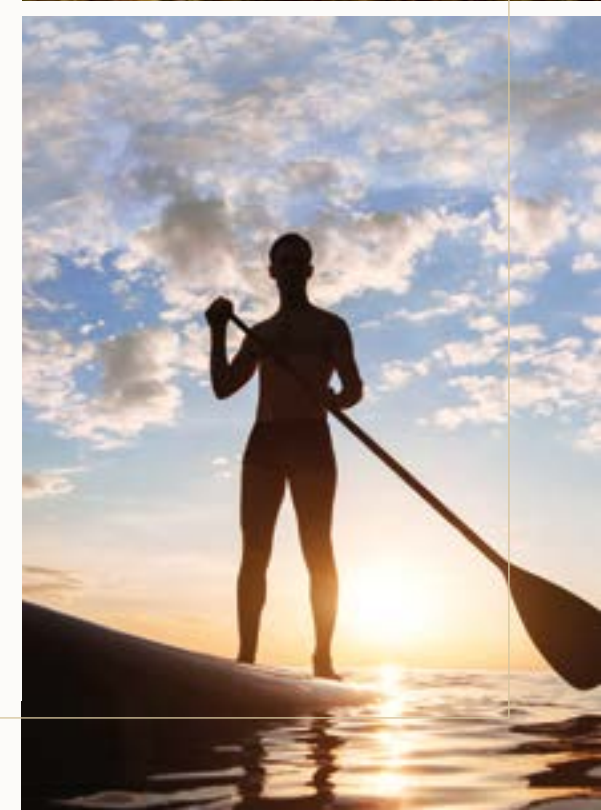
A TRULY UNIQUE COASTAL CULTURE

A truly unique coastal culture nestled on the scenic coast of County Down lies Newcastle, where modern innovation meets an ancient artisan heritage in the heart of a thriving community. Surrounded by breathtaking natural beauty, from the majestic Mourne Mountains to the pristine white sands of Tyrella Beach, this charming town offers the highest quality of life.

With a vibrant coastal culture that's constantly evolving, Newcastle's stunning seaside location is matched only by its character and close-knit community spirit. Whether exploring Murlough Nature Reserve or wandering through the bustling town centre, one thing is certain - Newcastle offers

its residents a mix of adventure, relaxation, culture, and natural beauty. Experience an unparalleled lifestyle at The Peaks, the ultimate new Newcastle address to call home. Indulge in warm, cosy fireside dining or unwind with a luxurious spa day at Slieve Donard Hotel.

Immerse yourself in the beauty of nature with invigorating salt-air forest, beach, and mountain walks or take on the challenge of a round of golf at the prestigious Royal County Down. Water enthusiasts will find their haven with sailing, paddle boarding, and kayaking adventures along the stunning shoreline. Embrace the coastal culture and settle in for a unique living experience with all the ingredients to cater to your physical and mental well-being.





| Culinary Delights

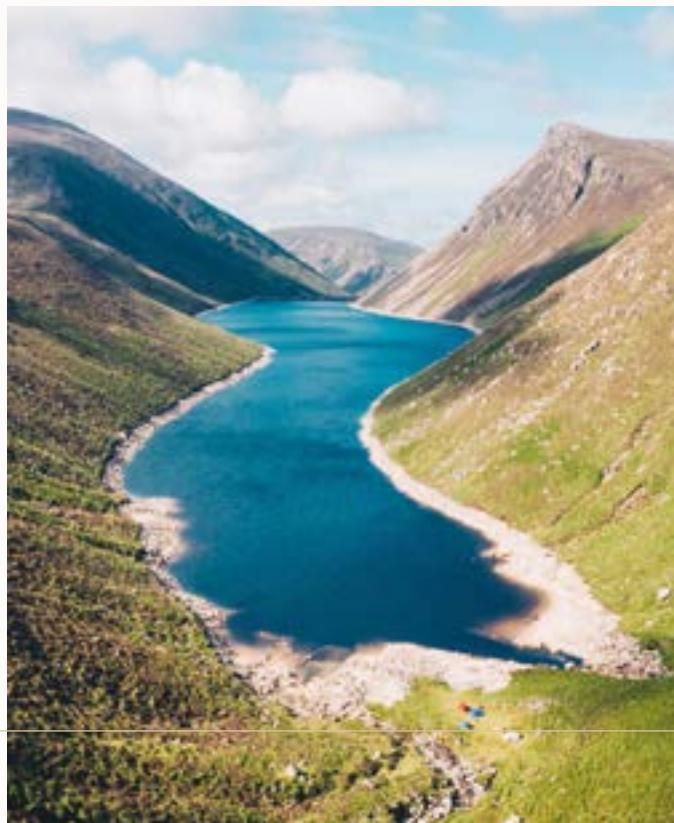
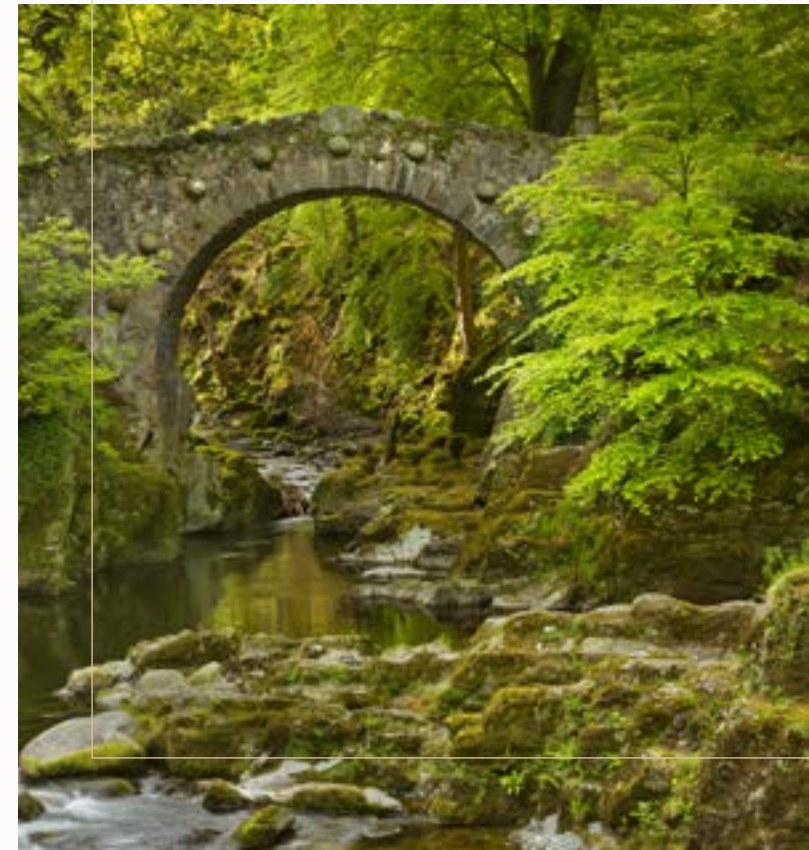
Newcastle is a food lover's paradise with many flavours and dining experiences to tantalise your taste buds. From contemporary European cuisine to fresh seafood specialities, all these gastronomic delights are just a short stroll away from The Peaks.

| The Great Outdoors

Residents have world-famous locations and areas of outstanding natural beauty on their doorstep. From the world-class Royal County Down Golf Course, up to the Mourne Mountains, down to the Silent Valley and across the genteel pathways of Tollymore Forest Park.

| Modern Convenience

Newcastle is a town that caters to all your needs! This town has everything from mouthwatering delicacies at independent delis and bakeries to top-rated schools and pharmacies. And that's not all; it boasts brand-name supermarkets and chemists, ensuring that your everyday life runs seamlessly.











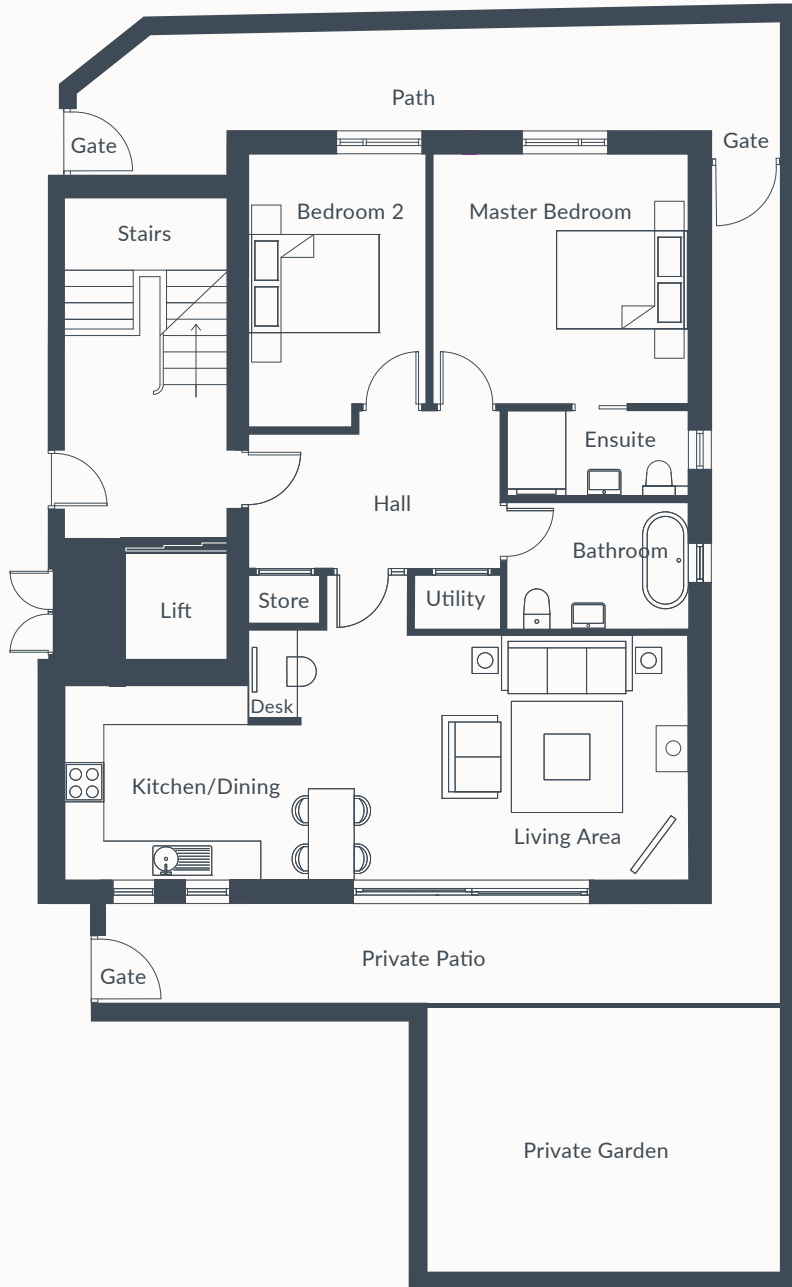












Apartment One

Ground Floor Garden Apartment
2 Bedroom | 900 sq. ft

GROUND FLOOR

LIVING/KITCHEN/
DINING/STUDY 31' 11" x 15' 2"

MASTER BED 13' 1" x 12' 2"

ENSUITE 9' 2" x 4' 3"

BEDROOM 2 12' 4" x 9' 2"

BATHROOM 9' 2" x 6' 1"

UTILITY 4' 11" x 2' 5"

PATIO/GARDEN 32' x 19'

THE
PEAKS

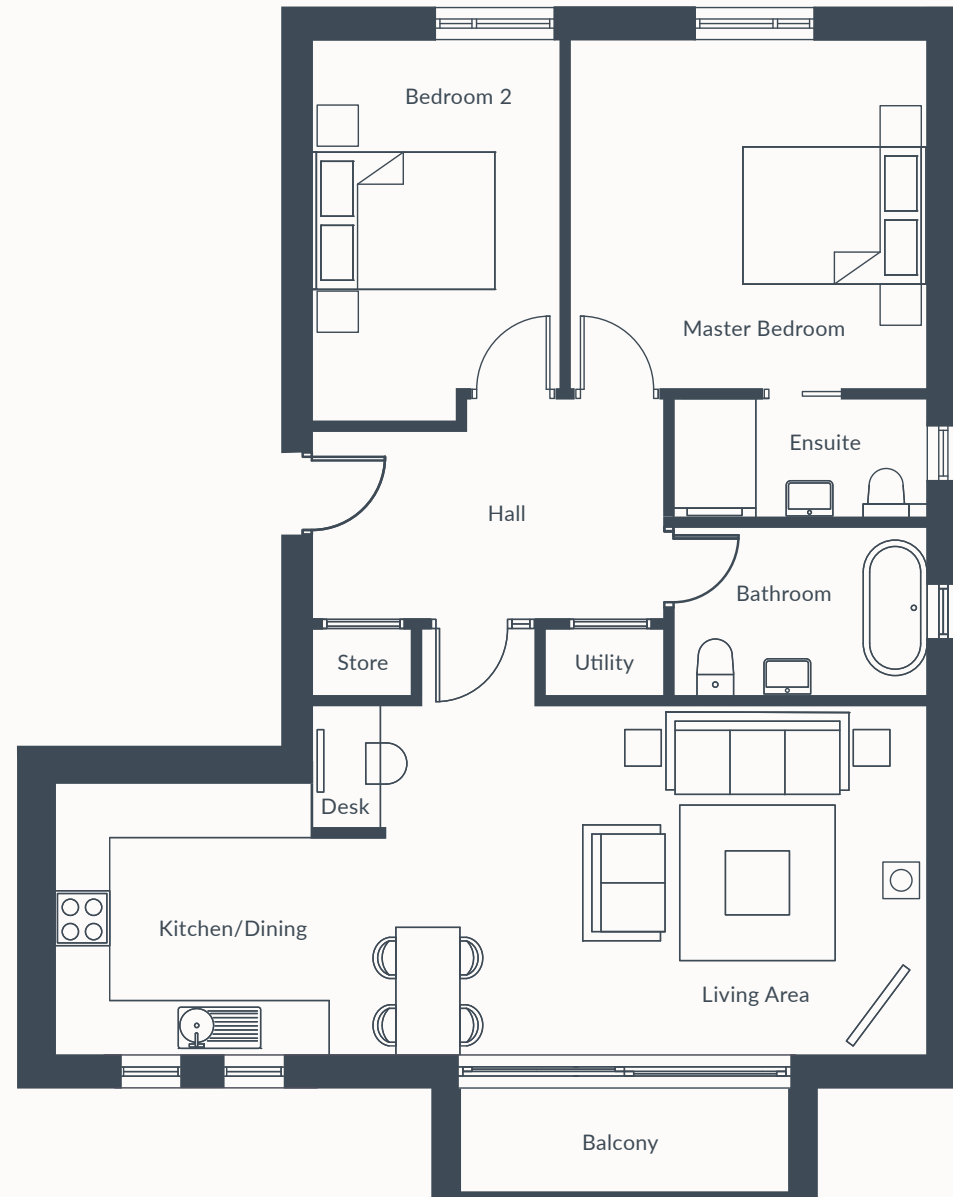
Apartment Two

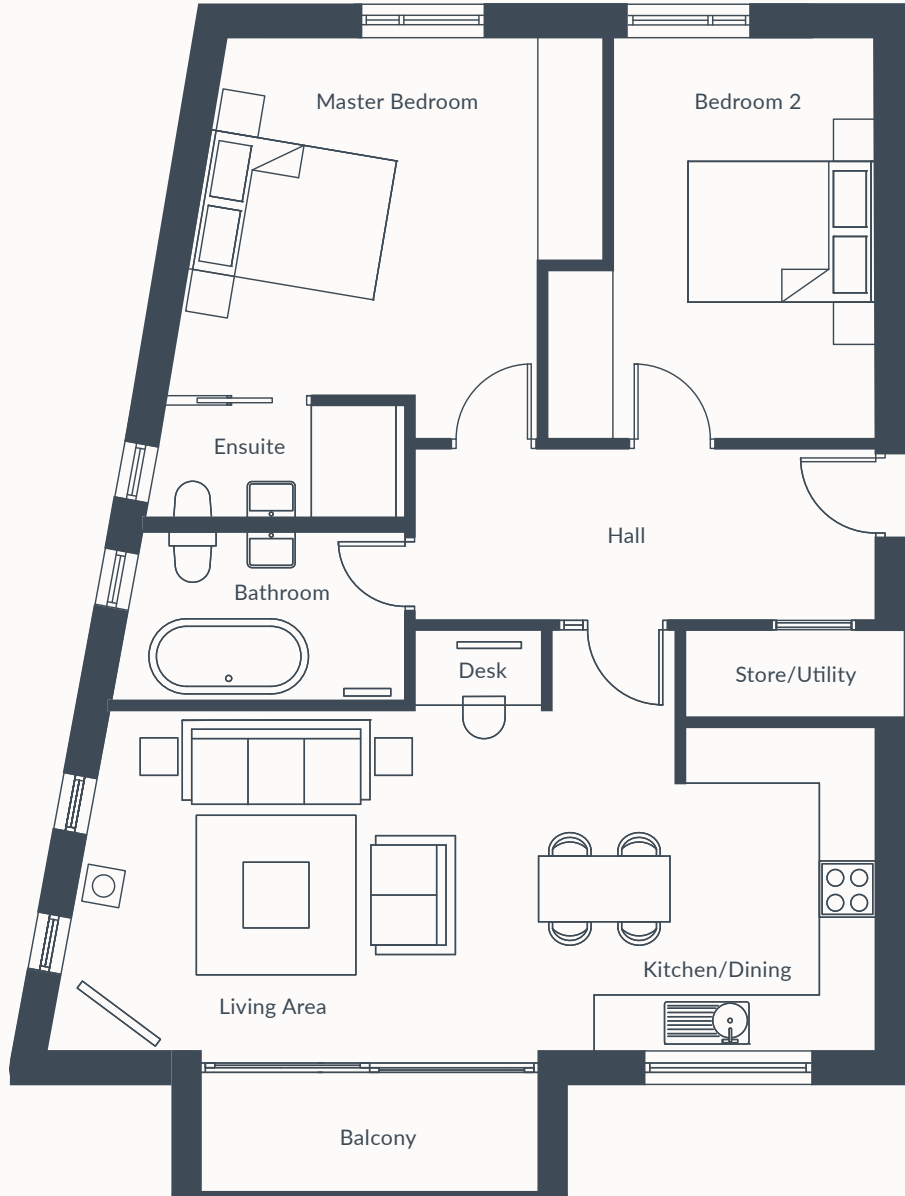
First Floor Apartment
2 Bedroom | 900 sq. ft

FIRST FLOOR

LIVING/KITCHEN/ DINING/STUDY	31' 11" x 15' 2"
MASTER BED	13' 1" x 12' 2"
ENSUITE	9' 2" x 4' 3"
BEDROOM 2	13' 4" x 9' 3"
BATHROOM	9' 2" x 6' 1"
UTILITY	4' 11" x 2' 5"
BALCONY	11' 10" x 4' 1"

THE
PEAKS





Apartment Three

First Floor Apartment
2 Bedroom | 900 sq. ft

FIRST FLOOR

LIVING/KITCHEN/ DINING/STUDY	27' 8" x 14' 7"
MASTER BED	14' 8" x 12' 8"
ENSUITE	8' 8" x 3' 11"
BEDROOM 2	12' 8" x 11' 4"
BATHROOM	9' 10" x 6'
UTILITY	9' 8" x 3'
BALCONY	11' 10" x 4' 1"

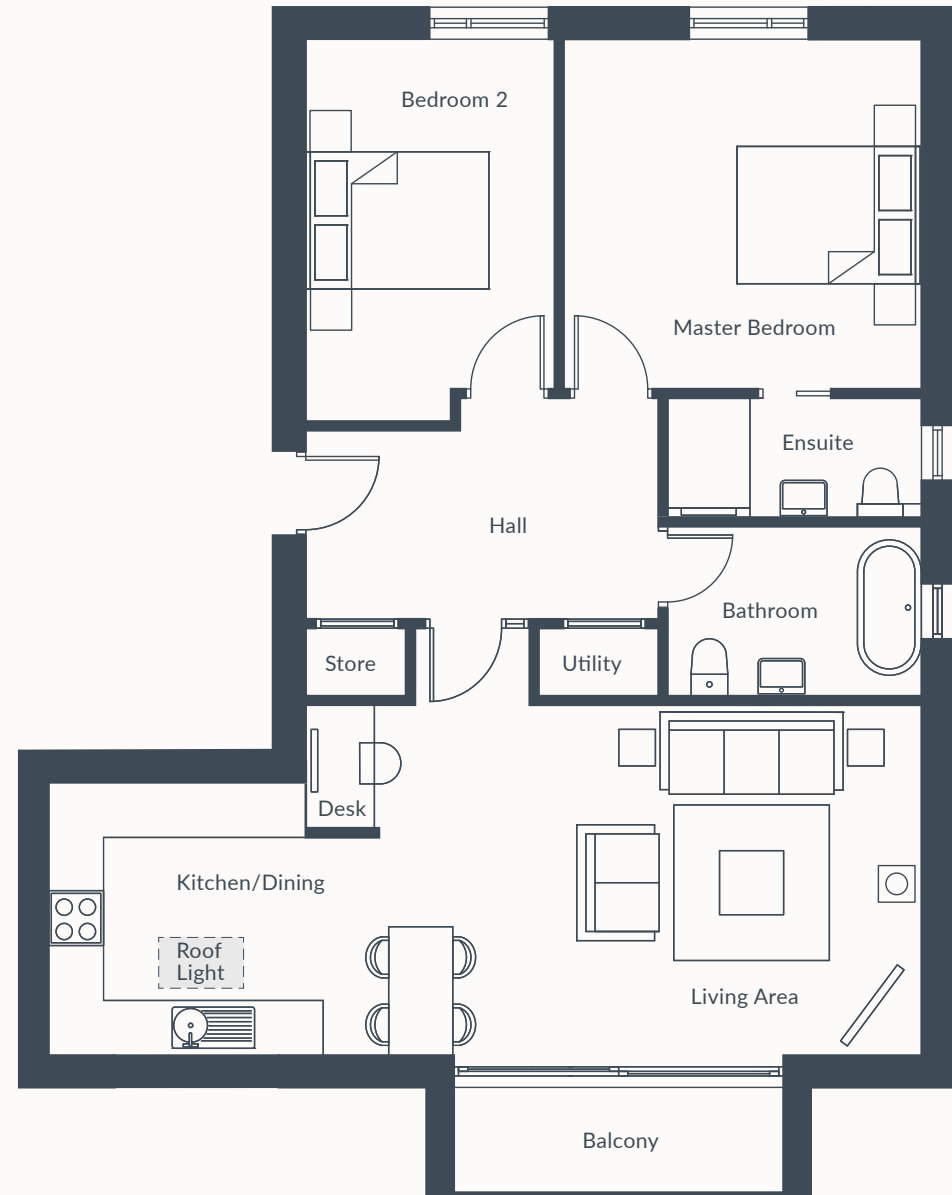
Apartment Four

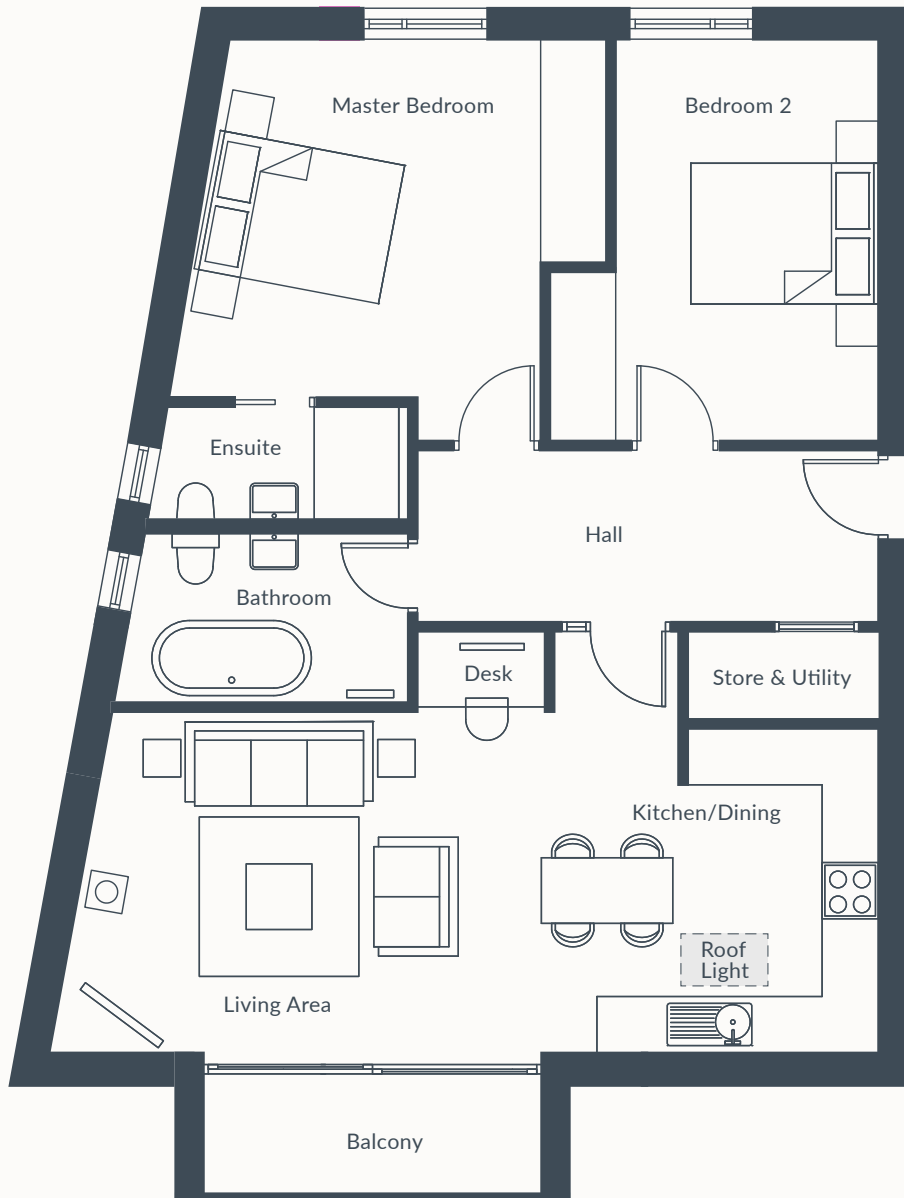
Second Floor Apartment
2 Bedroom | 900 sq. ft

SECOND FLOOR

LIVING/KITCHEN/ DINING/STUDY	31' 11" x 15' 2"
MASTER BED	13' 1" x 12' 2"
ENSUITE	9' 2" x 4' 3"
BEDROOM 2	13' 4" x 9' 3"
BATHROOM	9' 2" x 6' 1"
UTILITY	4' 11" x 2' 5"
BALCONY	11' 10" x 4' 1"

THE
PEAKS





Apartment Five

Second Floor Apartment
2 Bedroom | 900 sq. ft

GROUND FLOOR

LIVING/KITCHEN/ DINING/STUDY	27' 8" x 14' 7"
MASTER BED	14' 8" x 12' 8"
ENSUITE	8' 8" x 3' 11"
BEDROOM 2	12' 8" x 11' 4"
BATHROOM	9' 10" x 6'
UTILITY	9' 8" x 3'
BALCONY	11' 10" x 4' 1"

THE
PEAKS

Welcome to The Peaks, stunning apartments with interiors designed by Designer Jane Donaldson. By harnessing the breathtaking natural surroundings and with uninterrupted views of the Mourne Mountains, Jane has expertly created homes that are both functional and luxurious.

High-end materials, stunning finish options and impeccable aesthetics provide a warm and inviting atmosphere from the moment you step inside. From indulging in relaxing moments next to a cosy pot belly stove and luxuriating in a sumptuous bath, to seamlessly merging into work mode in the versatile home office, every apartment is tailored to meet all modern lifestyle needs. Balance work and play effortlessly from the privacy of your own balcony or garden.



THE PEAKS HIGH-END SPECIFICATION INCLUDES:

- » Professional Interior Design Service, by Jane Donaldson
- » Private south-facing balcony or garden
- » Fully fitted kitchen (two colour-scheme options) with integrated appliances including cooker, hob, oven, fridge freezer, dishwasher
- » Utility area with washer and dryer
- » Modern suites to Bathrooms and Ensuites
- » Fully tiled bathroom with colour and texture reminiscent of The Peaks
- » Feature wall panelling with LED lighting in the Living Area
- » Semi-engineered oak flooring in the hall and living areas
- » Fully painted walls and ceilings throughout
- » 'Work from Home' space
- » All bedrooms will be fully carpeted
- » Internet and satellite provision
- » Gas central heating with smart controls
- » Triple glazed windows
- » High levels of insulation
- » LED Lighting
- » Integrated fire alarm and protection system
- » Soft and hard landscaping in external common areas
- » Designated car park space for each apartment and bicycle stand
- » Intercom door entry system
- » Lift to first & second floors
- » Construction to current Building Regulations and Architect Certified
- » Management Company for all common areas
- » Automated lighting in common areas
- » NHBC warranty for 10 years
- » NOTE: A Gas Stove is an optional extra. Enquire with the Selling Agent.



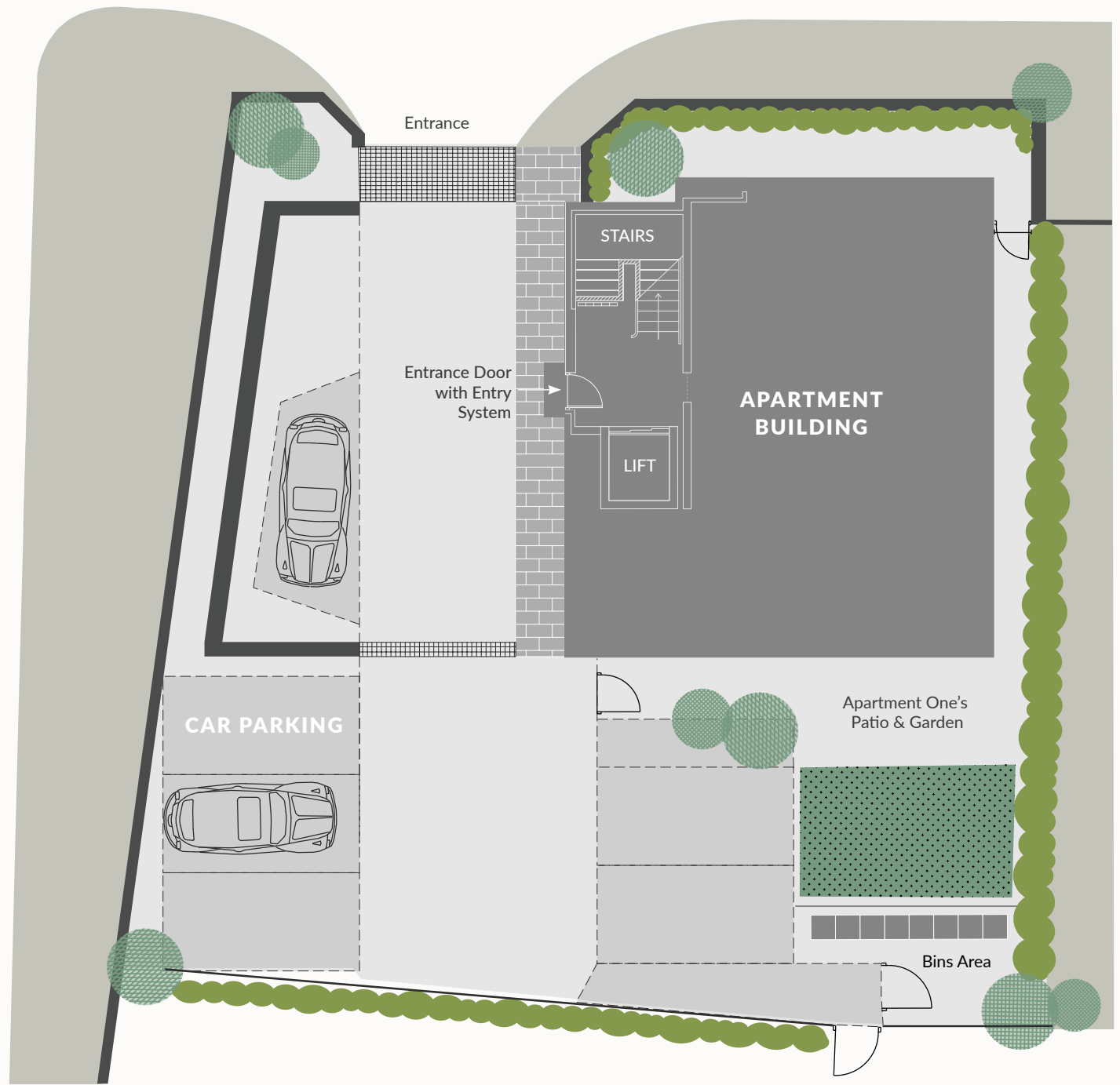
Jane Donaldson, JD Spatial Design
Interior Designer, The Peaks

With over 25 years of experience in commercial, retail, office and residential design, fit-outs and remodelling, spatial designer Jane Donaldson heads up an established practice based in Belfast. Driven by professionalism and imagination, JD Spatial Design advises people on how to make the most of their space.

Considering aesthetics, movement and functionality, Jane is known for designing interiors that flow seamlessly with our daily lives. As a contemporary artist, Jane's work is included in collections across the globe. Her signature style of abstract land and seascapes celebrate her native landscape and reflects her use of colour palette and texture.

THE PEAKS

SITE MAP





Selling Agent:



16 Main Street, Newcastle, BT33 0AD

Tel: (028) 4372 3408

Email: mail@lindsaygraham.co.uk

www: lindsaygraham.co.uk

Architect:



ARCHITECTS

info@mkarchitects.net

www.mkarchitects.net

Disclaimer:

These particulars do not constitute any part of an offer or contract. None of the statements contained in these particulars are to be relied on as statements or representations of fact, and intending purchasers must satisfy themselves by inspection or otherwise as to the correctness of each of the statements contained in these particulars. All measurements of area are quoted as Net Sales Area, which is calculated in accordance with the RICS Code of Measuring Practice (6th Edition) APP 21. Configurations of kitchens, bathrooms and wardrobes may be subject to alteration from those illustrated without prior notification. Purchasers should satisfy themselves as to the current specification when booking. The Vendor does not make or give, and neither the Selling Agent nor any person in their employment, has any authority to make or give any representation or warranty whatever in relation to any property. Artist's impressions and internal photographs are for illustration only. Plans are not to scale, and all dimensions shown are approximate.